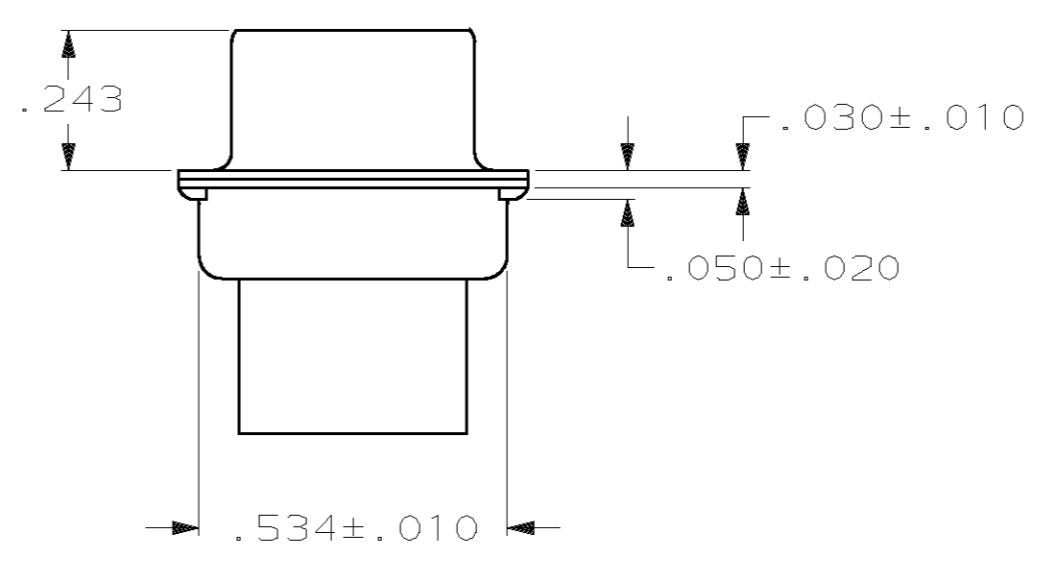
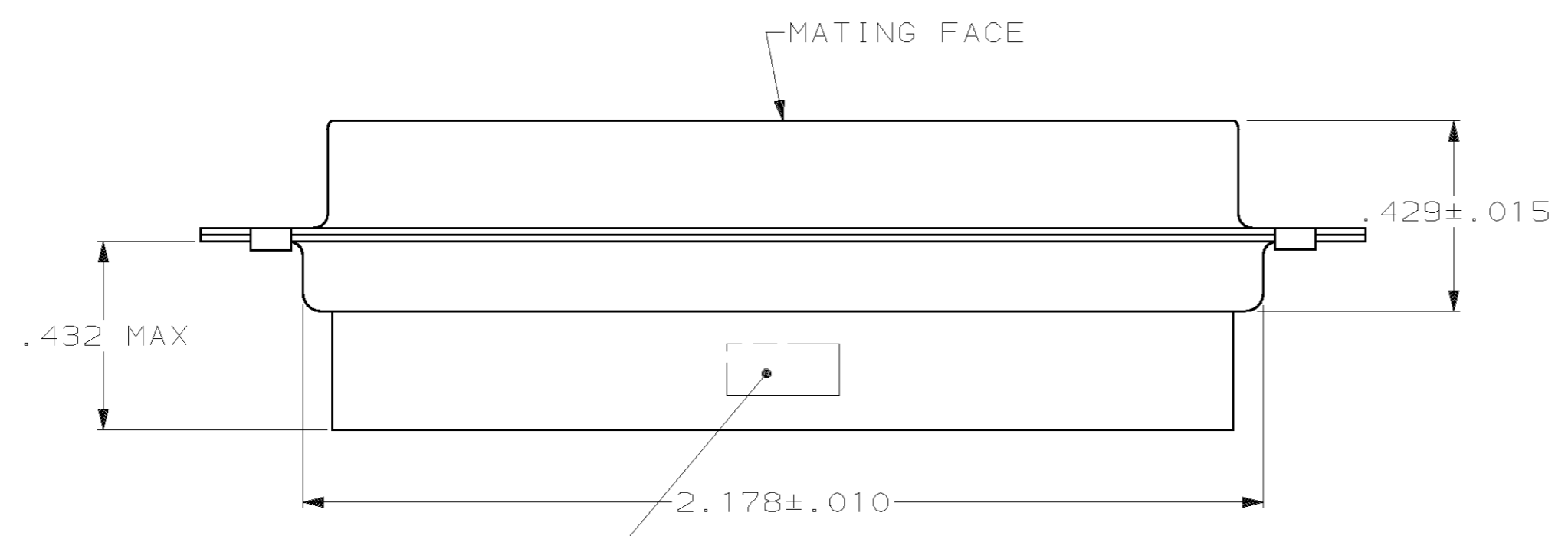
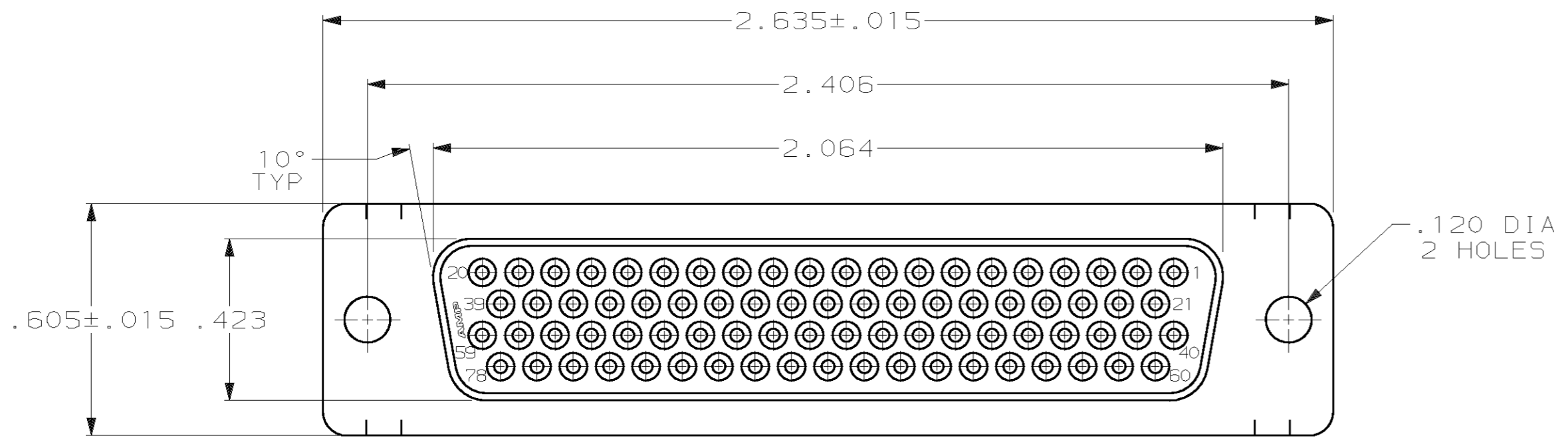


THIS DRAWING IS UNPUBLISHED. RELEASED FOR PUBLICATION
 BY AMP INCORPORATED. ALL RIGHTS RESERVED.

LOC	DIST	REVISIONS			
P	LTR	DESCRIPTION	DATE	DWN	APVD
GP	00				
	0	RELEASED PER EC 0513-0209-03	02 JAN 04	LB	5B



TYCO, PART NO & DATE CODE, MARKED IN AREA INDICATED, ON FAR SIDE

1. CONNECTOR ACCEPTS 22 DF SOCKET CONTACTS, RETENTION TINES ARE AN INTEGRAL PART OF INSERT.
2. FLAME RETARDANT 94V-0 RATED GLASS FILLED NYLON, COLOR: BLACK.
3. CARBON STEEL.
4. .000200 MIN. TIN PLATE OVER .000100 MIN. COPPER UNDERPLATE.

1658685-1
PART NUMBER

THIS DRAWING IS A CONTROLLED DOCUMENT.		DWN	L. BAUM	02JAN04	AMP Incorporated Harrisburg, PA 17105-3608
DIMENSIONS: INCH		CHK	S. BOLASH	02JAN04	
		APVD	M. WALMSLEY	02JAN04	
TOLERANCES UNLESS OTHERWISE SPECIFIED: 0 PLC ±- 1 PLC ±- 2 PLC ±- 3 PLC ±.005 4 PLC ±- ANGLES ±2°		NAME	RECEPTACLE ASSEMBLY, SIZE 5, 78 POSN, HDP-22, AMPLIMITE®		
MATERIAL	MOLDED PARTS: △	FINISH	SHELLS: △	PRODUCT SPEC	108-1268
SHELLS: △				APPLICATION SPEC	114-10001
CUSTOMER DRAWING			WEIGHT	-	RESTRICTED TO
			SCALE	3:1	SHEET 1 OF 1
			SIZE	A2	CAGE CODE
			DRAWING NO	00779	REV
			SCALE	3:1	REV
			SHEET	1	REV
			OF	1	REV
			REV	0	